

Amended Report

This replaces previous Report no.: INZ58565-07
 dated 19/06/17.

File Ref: INZ 58565

Page 1 of 5

TEST REPORT No.: INZ58565-07A

Client: Fastmount Limited
 Order No.: TBD
 Sample Description: Standard Profile Range
 Identification: As listed below
 Material Specification: Acetal copolymer
 Tested in accordance with: Client instruction

Test: SGS NZ was engaged by the client to carry out a repetitive pull-out load test (Fig.1) and a shear test (Fig. 2) on the Fastmount Standard Profile Range plastic mounting systems in various configurations.

Method: Repetitive pull-out test

The plastic clip set was subjected to cyclic pull-out loading at a rate of 100mm/min with a frequency of approximately 1 cycle per 10s. The initial pull-out force was measured and recorded and then again after 500 cycles.

Shear test

A shear force was applied to the assembled plastic clip set ensuring no separation between the male and female clips through their axis while under load.

Test Conditions - 23 ± 2°C, r.h 50 ± 10%

Results:

Male Clip (Coupled with PC-AF1)	Pull-out Force (Kgf)		Shear Force (Kgf)	Shear Failure Location
	Initial	After 500 Cycles		
PC-M1B	8.7	13.7	67.6	Male clip
PC-M2H	16.4	13.7	75.0	Male clip
PC-VM1	15.2	13.9	117.8	Male clip
PC-VMX	26.3	15.7	154.0	Male clip
PC-SM2	8.6	15.3	42.9	Male clip
PC-SM2H	13.4	22.6	44.0	Male clip

Note: PC-SM2 and PC-SM2H bonded to test mandrel with Fastmount SuperGroove Adhesive

Acceptance Criteria: Report findings

Tested by: G. Schoutens

Date: 18-May-17

Checked by: N. Woods

Date: 29-Sep-17



This document is issued by the Company subject to its General Conditions of Service printed overleaf, available on request or accessible at www.sgs.com/terms_and_conditions.htm and, for electronic format documents, subject to Terms and Conditions for Electronic Documents at www.sgs.com/terms_e-document.htm. Attention is drawn to the limitation of liability, indemnification and jurisdiction issues defined therein. Any holder of this document is advised that information contained hereon reflects the Company's findings at the time of its intervention only and within the limits of Client's instructions, if any. The Company's sole responsibility is to its Client and this document does not exonerate parties to a transaction from exercising all their rights and obligations under the transaction documents. This document cannot be reproduced except in full, without prior written approval of the Company. Any unauthorized alteration, forgery or falsification of the content or appearance of this document is unlawful and offenders may be prosecuted to the fullest extent of the law.

Unless otherwise stated the results shown in this test report refer only to the sample(s) tested and such sample(s) are retained for 14 days only.

TEST REPORT No.: INZ58565-07A

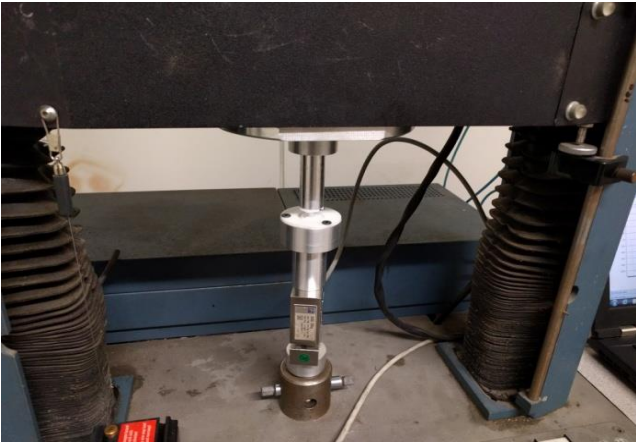


Figure 1 - Pull-out cycling

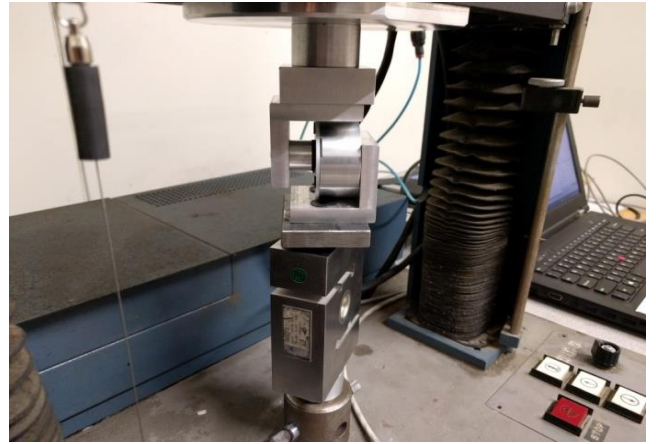


Figure 2 - Shear test

Appendix A - Standard Profile Range



PC-AF1



PC-M1B



PC-M2H



PC-MV1



PC-VMX



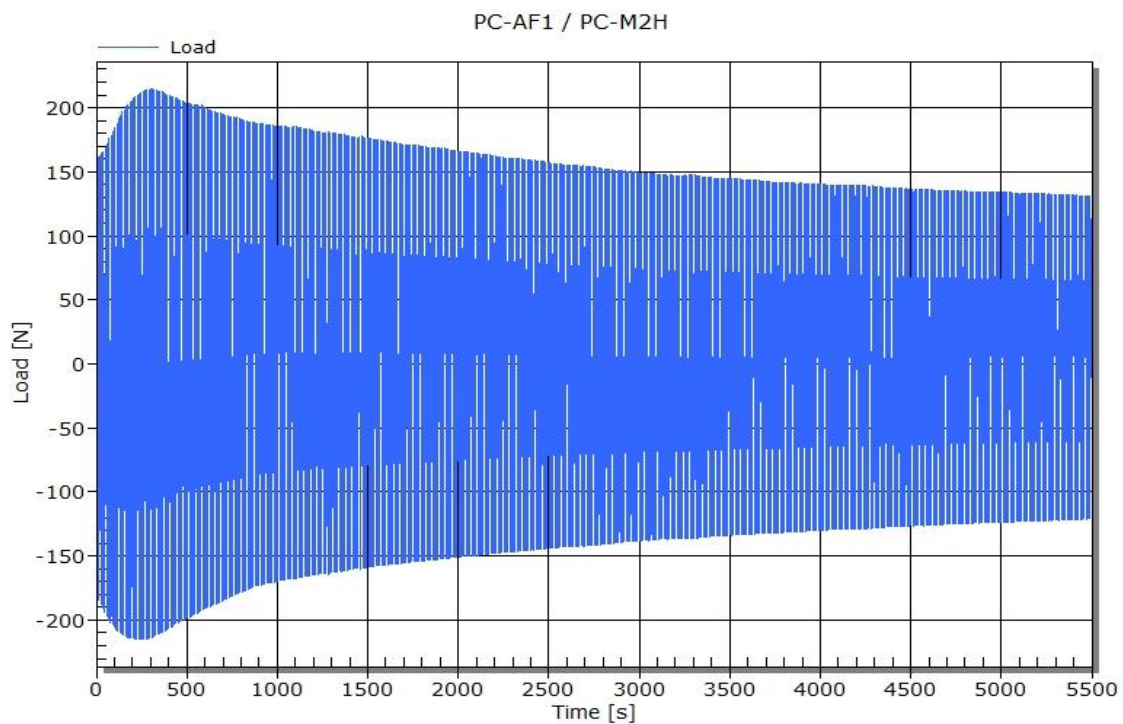
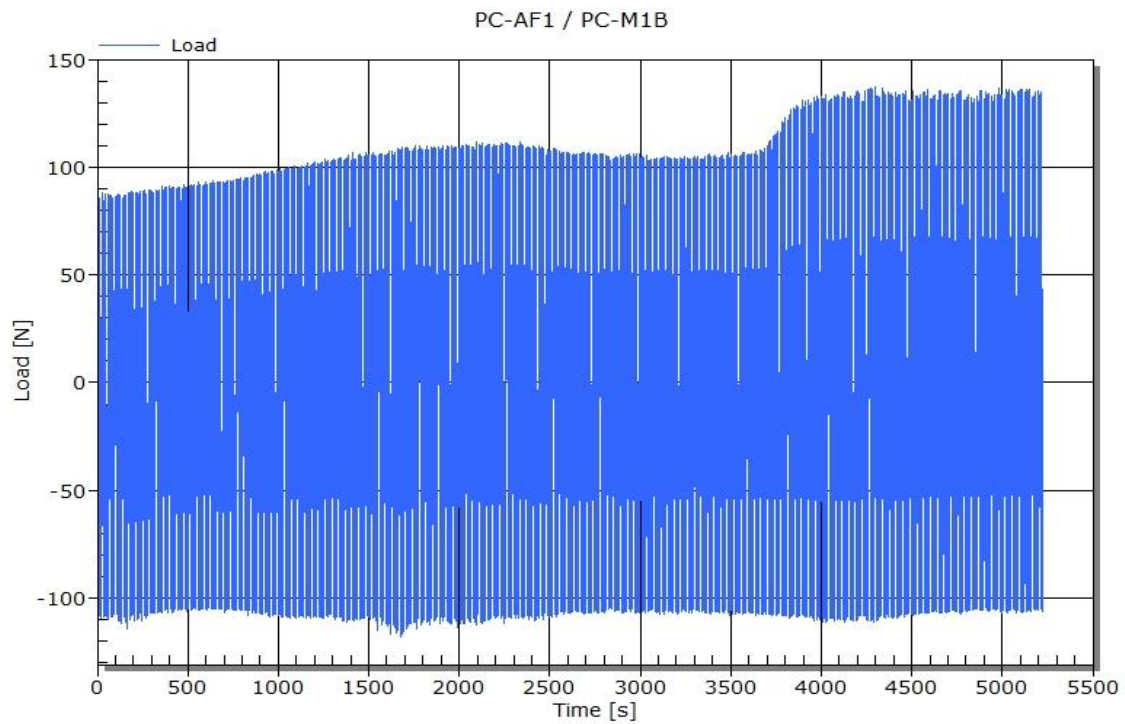
PC-SM2



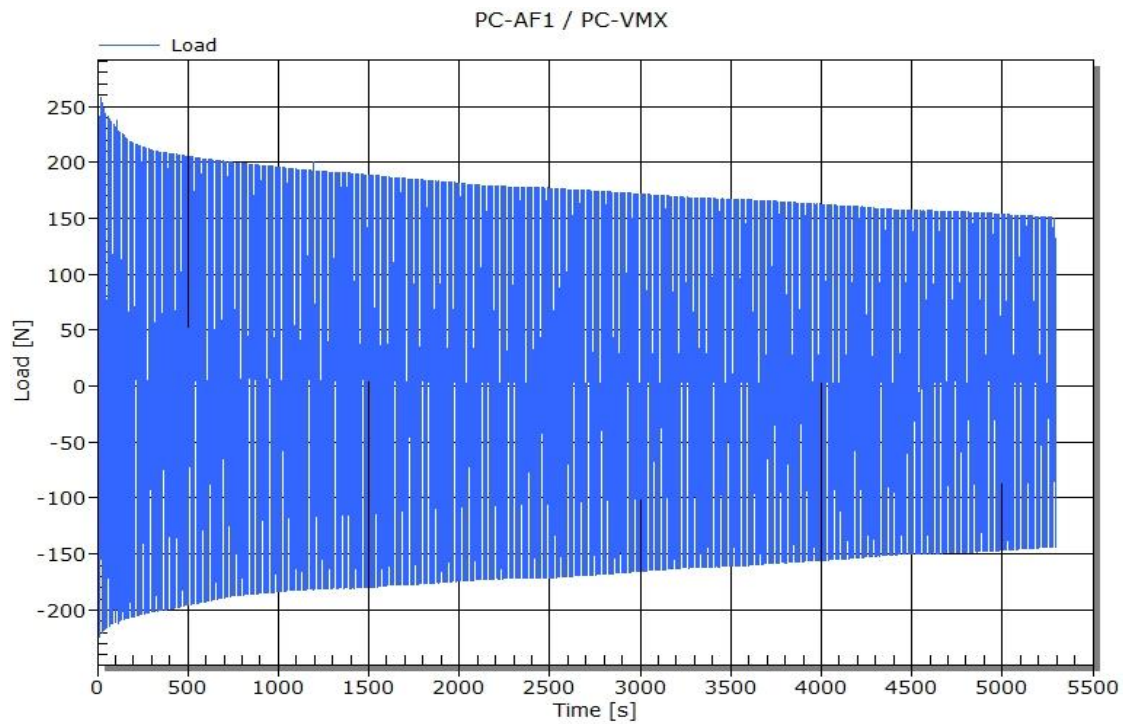
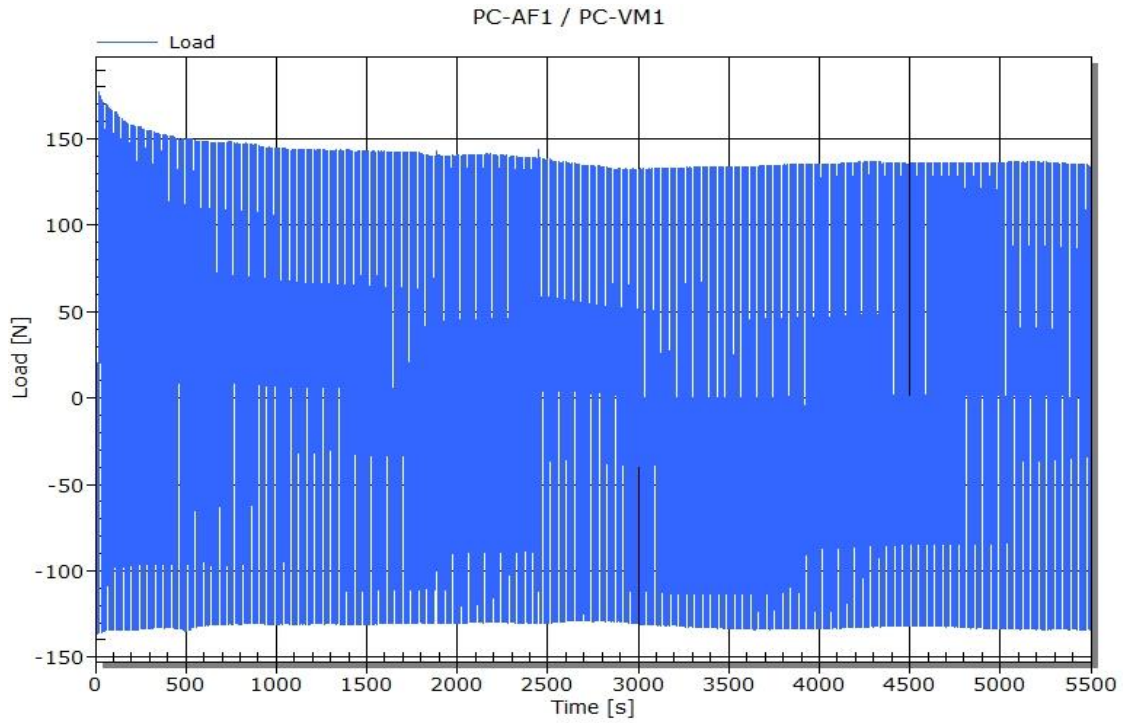
PC-SM2H

TEST REPORT No.: INZ58565-07A

Appendix B - Graphical representation of repetitive pull-out test data



TEST REPORT No.: INZ58565-07A



TEST REPORT No.: INZ58565-07A

