

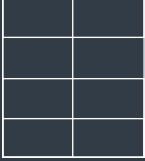



Stratlock Range

WALLS

This document describes the layout of clips for standard panels sizes in walls, listed below. For ceilings, please consult the Clip Layout guide for ceiling panels.

For custom panels and/or custom application please contact the Fastmount team or Fastmount distributors for technical support.

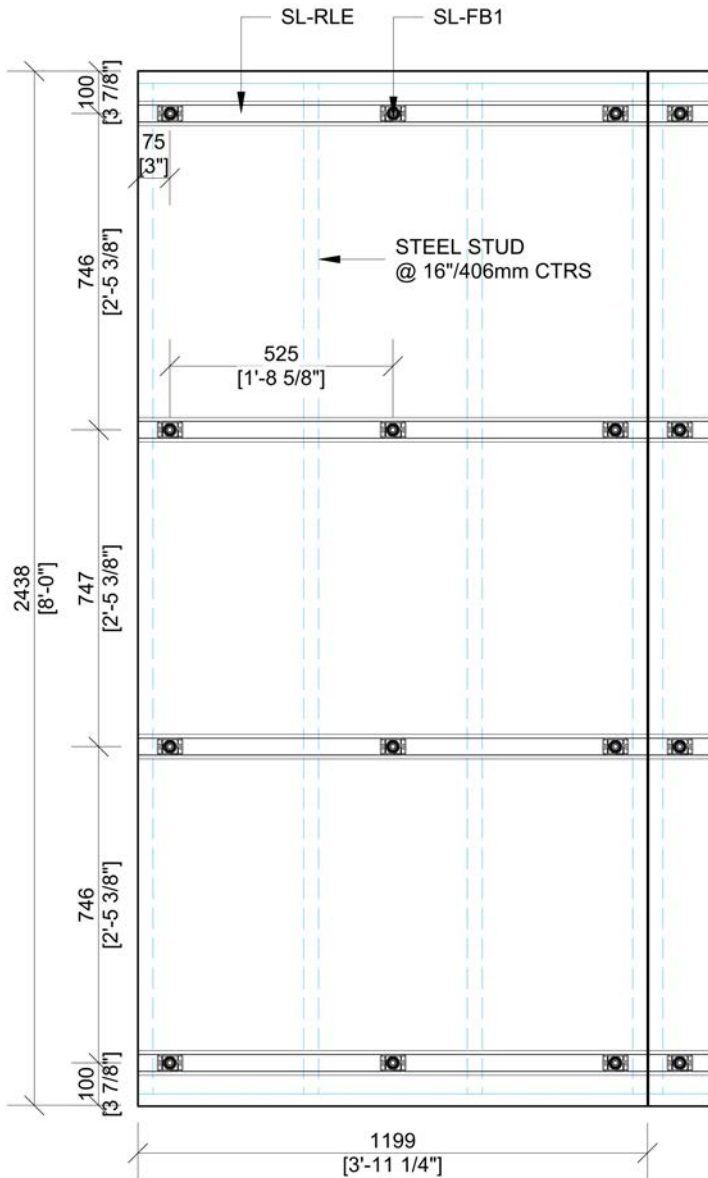
	 4 x 8 ft panels (1200 x 2400 mm)	 2 x 8 ft panels (600 x 2400 mm)	 4 x 2 ft panels (1200 x 600 mm)	 Complex geometries
Stratlock with rail system	Page 2	Page 4	Page 6	Page 8
Stratlock with U channel or timber batten	Page 3	Page 5	Page 7	Page 9
FC on plywood sheet				Page 10

Stratlock Range

WALLS USING STRATLOCK RAIL

PANEL SIZE: 4 X 8FT / 1200 X 2400MM

This document describes the layout of clips for standard panels of the specified size. For custom panels and or custom application please contact Fastmount team or Fastmount distributors for technical support.



VARIATIONS

- The maximum recommended distance between rails is 800mm / 2.6ft. Panels taller than described in this layout might require more than 4 horizontal rails.
- Place clips between 50 and 100 mm / 2 and 4 inches from vertical edge of the panels.

TIPS

- For light weight panels or very thin panels, more rails might be advised to avoid wavy edges.

PANEL WEIGHT LIMITS

- The maximum panel density for this application is 25kg per m² or 5 lbs per square foot.
- Male clips SL-M10 can only be applied to panel densities of maximum 15kg per m² or 3 lbs per square foot. Anything over this should be mounted with the SL-M18 male clips.

Model	Max panel weight density: Walls	Max panel weight density: Ceilings
SL-M10	15kg/m ² (3 lb/ft ²)	10kg/m ² (2 lb/ft ²)
SL-M18	25kg/m ² (5 lb/ft ²)	25kg/m ² (5 lb/ft ²)
SL-M18-FR	25kg/m ² (5 lb/ft ²)	25kg/m ² (5 lb/ft ²)

QUANTITIES PER SPECIFIED PANEL SIZE

Imperial system

Product code	Description	Per 4 x 8 ft area	Per square feet
SL-RLE	Aluminium extrusion	15.75 ft	0.49 ft/ft ²
SL-FB1	Female clip	12 units	0.375 units/ft ²
SL-M10 or M18	Male clip	12 units	0.375 units/ft ²

Metric system

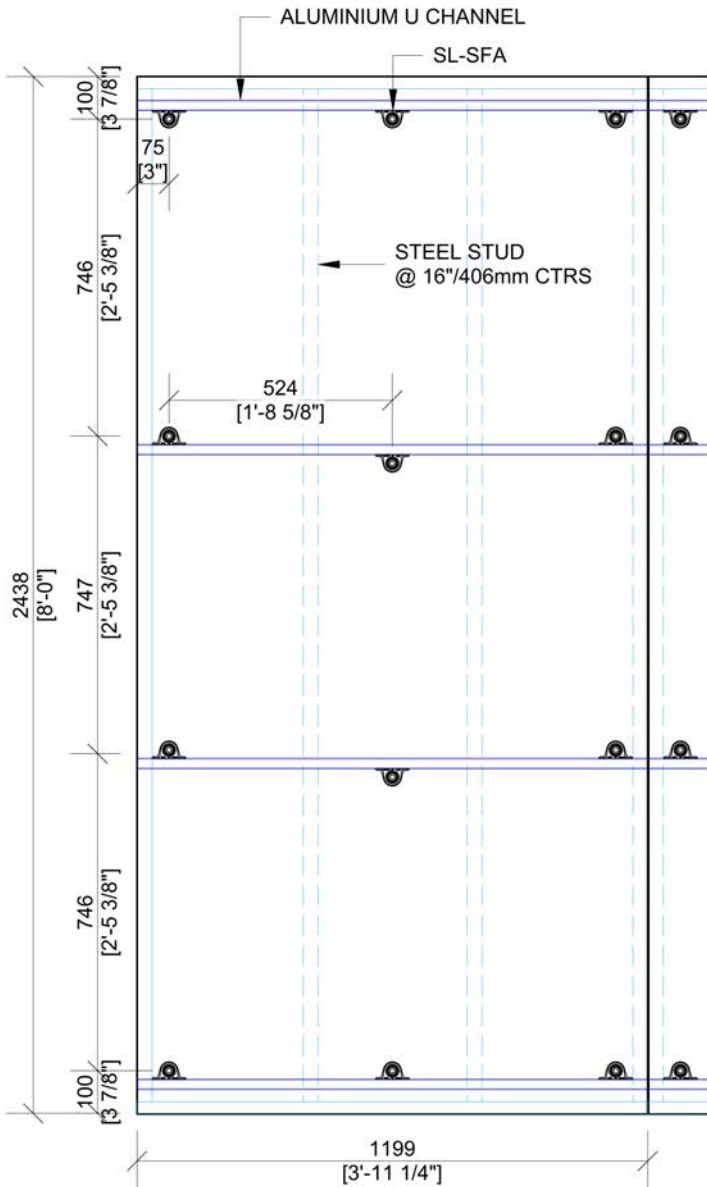
Product code	Description	Per 1.2 x 2.4m area	Per square metre
SL-RLE	Aluminium extrusion	4800 mm	1,666 m/m ²
SL-FB1	Female clip	12 units	4.16 units/m ²
SL-M10 or M18	Male clip	12 units	4.16 units/m ²



Stratlock Range

WALLS USING ALUMINIUM U CHANNEL 1" X 1" X 1/8" / 25 X 25 X 3MM
 PANEL SIZE: 4 X 8FT / 1200 X 2400MM

This document describes the layout of clips for standard panels of the specified size. For custom panels and or custom application please contact Fastmount team or Fastmount distributors for technical support.



VARIATIONS

- The maximum recommended distance between rails is 800mm / 2.6ft. Panels taller than described in this layout might require more than 4 horizontal rails.
- Place clips between 50 and 100 mm / 2 and 4 inches from vertical edge of the panels.

TIPS

- For light weight panels or very thin panels, more U channels might be advised to avoid wavy edges.
- Box Section or RHS section can also be used in place of the U channel.
- Timber Battens can also be used in place of the U channel.

PANEL WEIGHT LIMITS

- The maximum panel density for this application is 25kg per m² or 5 lbs per square foot.
- Male clips SL-M10 can only be applied to panel densities of maximum 15kg per m² or 3 lbs per square foot. Anything over this should be mounted with the SL-M18 male clips.

Model	Max panel weight density: Walls	Max panel weight density: Ceilings
SL-M10	15kg/m ² (3 lb/ft ²)	10kg/m ² (2 lb/ft ²)
SL-M18	25kg/m ² (5 lb/ft ²)	25kg/m ² (5 lb/ft ²)
SL-M18-FR	25kg/m ² (5 lb/ft ²)	25kg/m ² (5 lb/ft ²)

QUANTITIES PER SPECIFIED PANEL SIZE

Imperial system

Product code	Description	Per 4 x 8 ft area	Per square feet
Orange 1"x 1"x 1/8"	Aluminium U Channel	15.75 ft	0.49 ft/ft ²
SL-SFA1	Female clip	12 units	0.375 units/ft ²
SL-M10 or M18	Male clip	12 units	0.375 units/ft ²

Metric system

Product code	Description	Per 1.2 x 2.4m area	Per square metre
Orange 1"x 1"x 1/8"	Aluminium U Channel	4800 mm	1,666 m/m ²
SL-SFA1	Female clip	12 units	4.16 units/m ²
SL-M10 or M18	Male clip	12 units	4.16 units/m ²

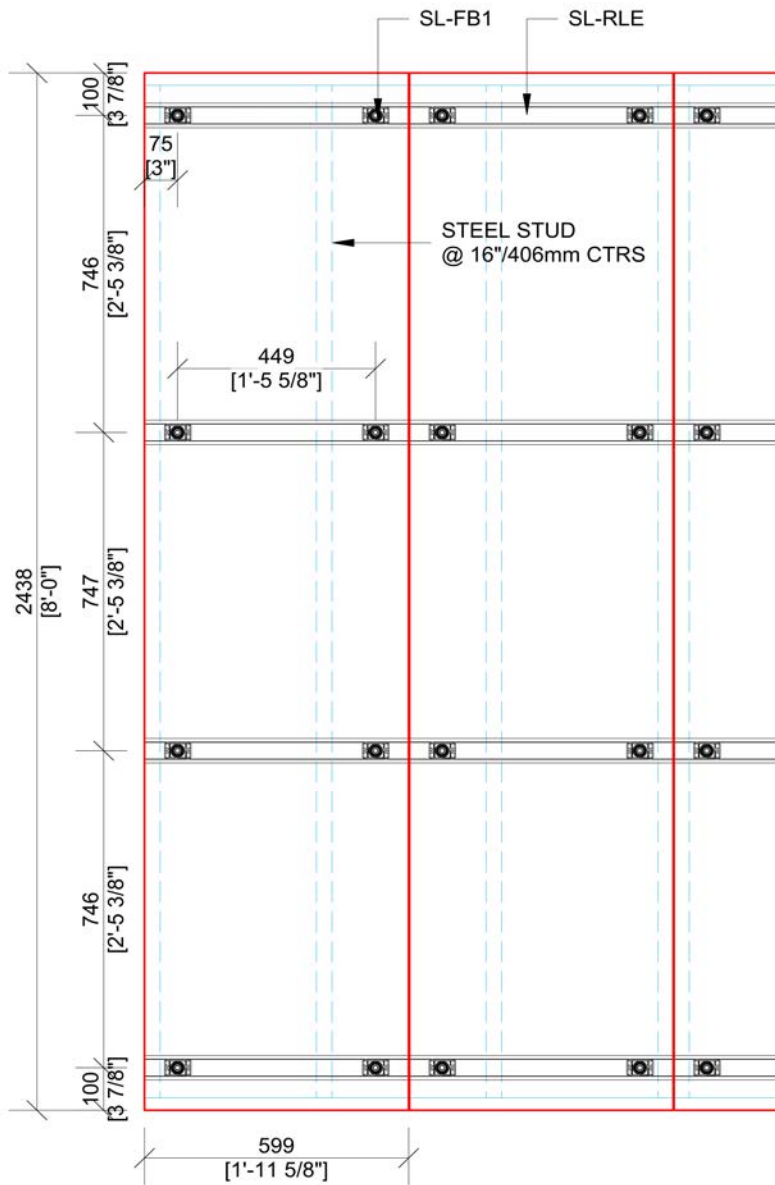


Stratlock Range

WALLS USING STRATLOCK RAIL

PANEL SIZE: 2 X 8 FT / 600 X 2400 MM

This document describes the layout of clips for standard panels of the specified size. For custom panels and or custom application please contact Fastmount team or Fastmount distributors for technical support.



VARIATIONS

- The maximum recommended distance between rails is 800mm / 2.6ft. Panels taller than described in this layout might require more than 4 horizontal rails.
- Place clips between 50 and 100 mm / 2 and 4 inches from vertical edge of the panels.

TIPS

- For light weight panels or very thin panels, more rails might be advised to avoid wavy edges.

PANEL WEIGHT LIMITS

- The maximum panel density for this application is 25kg per m² or 5 lbs per square foot
- Male clips SL-M10 can only be applied to panel densities of maximum 15kg per m² or 3 lbs per square foot. Anything over this should be mounted with the SL-M18 male clips.

Model	Max panel weight density: Walls	Max panel weight density: Ceilings
SL-M10	15kg/m ² (3 lb/ft ²)	10kg/m ² (2 lb/ft ²)
SL-M18	25kg/m ² (5 lb/ft ²)	25kg/m ² (5 lb/ft ²)
SL-M18-FR	25kg/m ² (5 lb/ft ²)	25kg/m ² (5 lb/ft ²)

QUANTITIES PER SPECIFIED PANEL SIZE

Imperial system

Product code	Description	Per 2 x 8 ft area	Per square feet
SL-RLE	Aluminium extrusion	7.87 ft	0.5 ft/ft ²
SL-FB1	Female clip	8 units	0.5 units/ft ²
SL-M18-FR or M18	Male clip	8 units	0.5 units/ft ²

Metric system

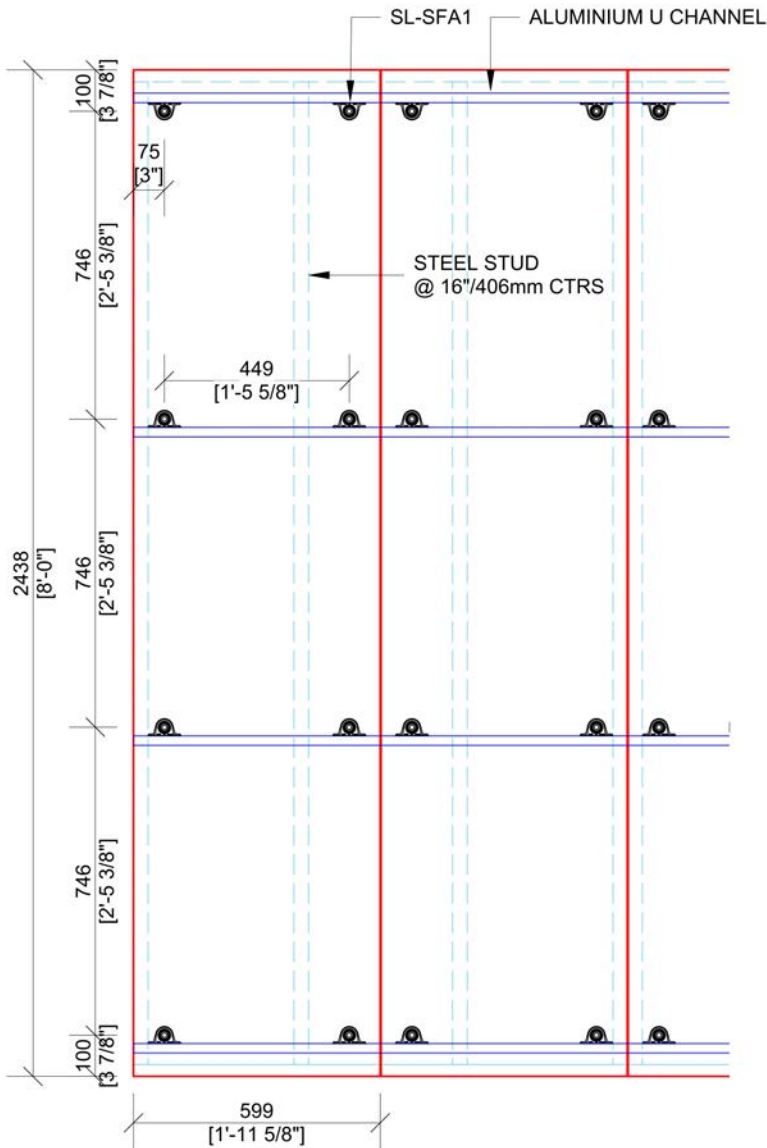
Product code	Description	Per 0.6 x 2.4m area	Per square metre
SL-RLE	Aluminium extrusion	2400 mm	1,667 m/m ²
SL-FB1	Female clip	8 units	5.6 units/m ²
SL-M18-FR or M18	Male clip	8 units	5.6 units/m ²



Stratlock Range

WALLS USING ALUMINIUM U CHANNEL 1" X 1" X 1/8" / 25 X 25 X 3MM
 PANEL SIZE: 2 X 8FT / 600 X 2400MM

This document describes the layout of clips for standard panels of the specified size. For custom panels and or custom application please contact Fastmount team or Fastmount distributors for technical support.



VARIATIONS

- The maximum recommended distance between rails is 800mm / 2.6ft. Panels taller than described in this layout might require more than 4 horizontal rails.
- Place clips between 50 and 100 mm / 2 and 4 inches from vertical edge of the panels.

TIPS

- For light weight panels or very thin panels, more U channels might be advised to avoid wavy edges.
- Box Section or RHS section can also be used in place of the U channel.
- Timber Battens can also be used in place of the U channel.

PANEL WEIGHT LIMITS

- The maximum panel density for this application is 25kg per m² or 5 lbs per square foot
- Male clips SL-M10 can only be applied to panel densities of maximum 15kg per m² or 3 lbs per square foot. Anything over this should be mounted with the SL-M18 male clips.

Model	Max panel weight density: Walls	Max panel weight density: Ceilings
SL-M10	15kg/m ² (3 lb/ft ²)	10kg/m ² (2 lb/ft ²)
SL-M18	25kg/m ² (5 lb/ft ²)	25kg/m ² (5 lb/ft ²)
SL-M18-FR	25kg/m ² (5 lb/ft ²)	25kg/m ² (5 lb/ft ²)

QUANTITIES PER SPECIFIED PANEL SIZE

Imperial system

Product code	Description	Per 2 x 8 ft area	Per square feet
Orange 1"x 1"x 1/8"	Aluminium U Channel	7.87 ft	0.50 ft/ft ²
SL-SFA1	Female clip	8 units	0.5 units/ft ²
SL-M10 or M18	Male clip	8 units	0.5 units/ft ²

Metric system

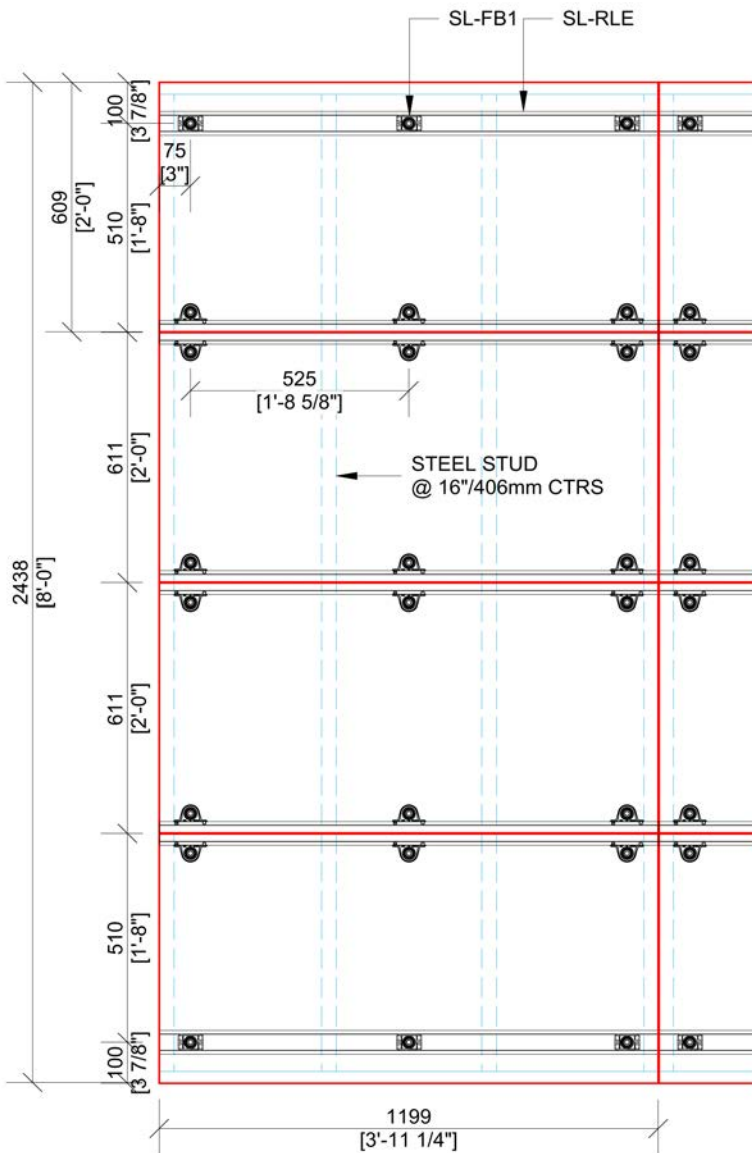
Product code	Description	Per 1.2 x 2.4m area	Per square metre
Orange 1"x 1"x 1/8"	Aluminium U Channel	2400 mm	1,667 m/m ²
SL-SFA1	Female clip	8 units	5.6 units/m ²
SL-M10 or M18	Male clip	8 units	5.6 units/m ²



Stratlock Range

WALLS USING STRATLOCK RAIL PANEL SIZE: 4 X 2FT / 1200 X 600MM

This document describes the layout of clips for standard panels of the specified size. For custom panels and or custom application please contact Fastmount team or Fastmount distributors for technical support.



VARIATIONS

- The maximum recommended distance between rails is 800mm / 2.6ft. Panels taller than described in this layout might require more than 4 horizontal rails.
- Place clips between 50 and 100 mm / 2 and 4 inches from vertical edge of the panels.

TIPS

- For light weight panels or very thin panels, more rails might be advised to avoid wavy edges.

PANEL WEIGHT LIMITS

- The maximum panel density for this application is 25kg per m² or 5 lbs per square foot.
- Male clips SL-M10 can only be applied to panel densities of maximum 15kg per m² or 3 lbs per square foot. Anything over this should be mounted with the SL-M18 male clips.

Model	Max panel weight density: Walls	Max panel weight density: Ceilings
SL-M10	15kg/m ² (3 lb/ft ²)	10kg/m ² (2 lb/ft ²)
SL-M18	25kg/m ² (5 lb/ft ²)	25kg/m ² (5 lb/ft ²)
SL-M18-FR	25kg/m ² (5 lb/ft ²)	25kg/m ² (5 lb/ft ²)

QUANTITIES PER SPECIFIED PANEL SIZE

Imperial system

Product code	Description	Per 4 x 2 ft area	Per square feet
SL-RLE	Aluminium extrusion	19.7 ft	0.61 ft/ft ²
SL-FA1	Female clip	18 units	0.56 units/ft ²
SL-FB1	Female clip	6 units	0.187 units/ft ²
SL-M10 or M18	Male clip	24 units	0.75 units/ft ²

Metric system

Product code	Description	Per 1.2 x 0.6m area	Per square metre
SL-RLE	Aluminium extrusion	6000 mm	1,667 m/m ²
SL-FA1	Female clip	18 units	6.25 units/m ²
SL-FB1	Female clip	6 units	2 units/m ²
SL-M10 or M18	Male clip	24 units	8.3 units/m ²

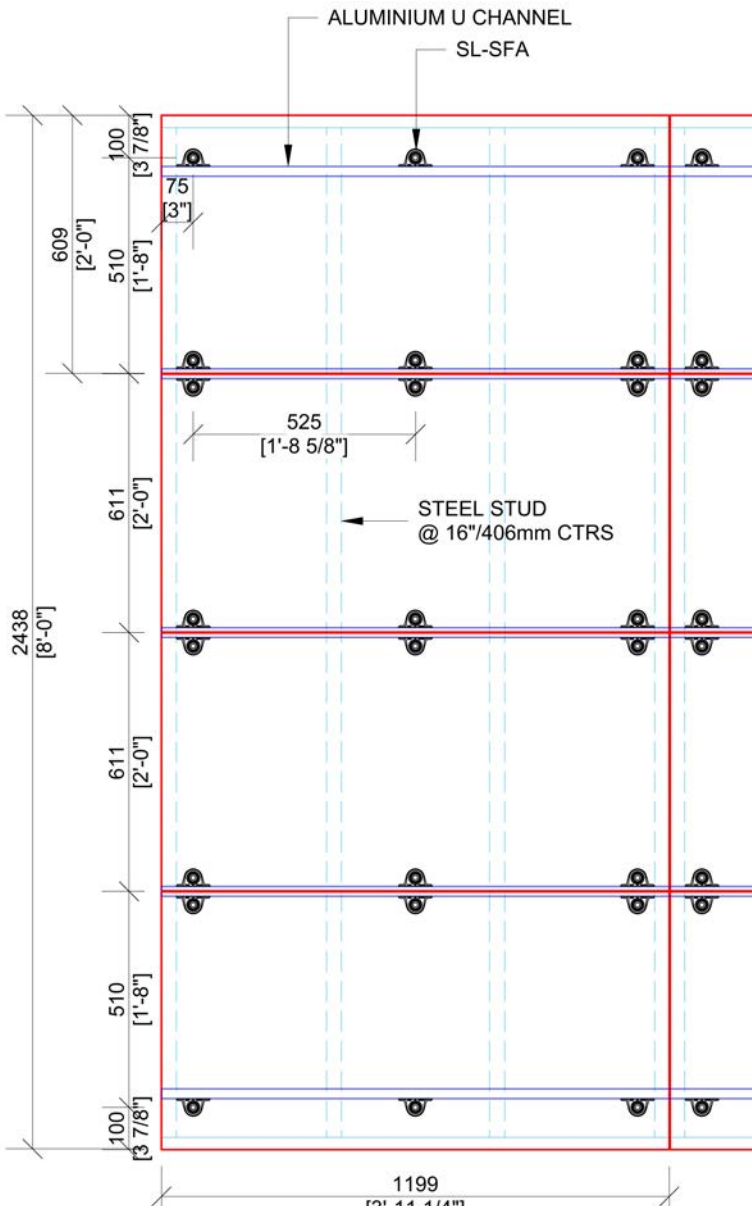


Stratlock Range

WALLS USING ALUMINIUM U CHANNEL 1" X 1" X 1/8" / 25 X 25 X 3MM

PANEL SIZE: 4 X 2FT / 1200 X 600MM

This document describes the layout of clips for standard panels of the specified size. For custom panels and or custom application please contact Fastmount team or Fastmount distributors for technical support.



VARIATIONS

- The maximum recommended distance between rails is 800mm / 2.6ft. Panels taller than described in this layout might require more than 4 horizontal rails.
- Place clips between 50 and 100 mm / 2 and 4 inches from vertical edge of the panels.

TIPS

- For light weight panels or very thin panels, more U channels might be advised to avoid wavy edges.
- Box Section or RHS section can also be used in place of the U channel.
- Timber Battens can also be used in place of the U channel.

PANEL WEIGHT LIMITS

- The maximum panel density for this application is 25kg per m² or 5 lbs per square foot.
- Male clips SL-M10 can only be applied to panel densities of maximum 15kg per m² or 3 lbs per square foot. Anything over this should be mounted with the SL-M18 male clips.

Model	Max panel weight density: Walls	Max panel weight density: Ceilings
SL-M10	15kg/m ² (3 lb/ft ²)	10kg/m ² (2 lb/ft ²)
SL-M18	25kg/m ² (5 lb/ft ²)	25kg/m ² (5 lb/ft ²)
SL-M18-FR	25kg/m ² (5 lb/ft ²)	25kg/m ² (5 lb/ft ²)

QUANTITIES PER SPECIFIED PANEL SIZE

Imperial system

Product code	Description	Per 4 x 2 ft area	Per square feet
Orange 1"x 1"x 1/8"	Aluminium U Channel	19.7 ft	0.61 ft/ft ²
SL-SFA1	Female clip	24 units	0.75 units/ft ²
SL-M10 or M18	Male clip	24 units	0.75 units/ft ²

Metric system

Product code	Description	Per 1.2 x 0.6m area	Per square metre
Orange 1"x 1"x 1/8"	Aluminium U Channel	6000 mm	1,667 m/m ²
SL-SFA1	Female clip	24 units	8.3 units/m ²
SL-M10 or M18	Male clip	24 units	8.3 units/m ²

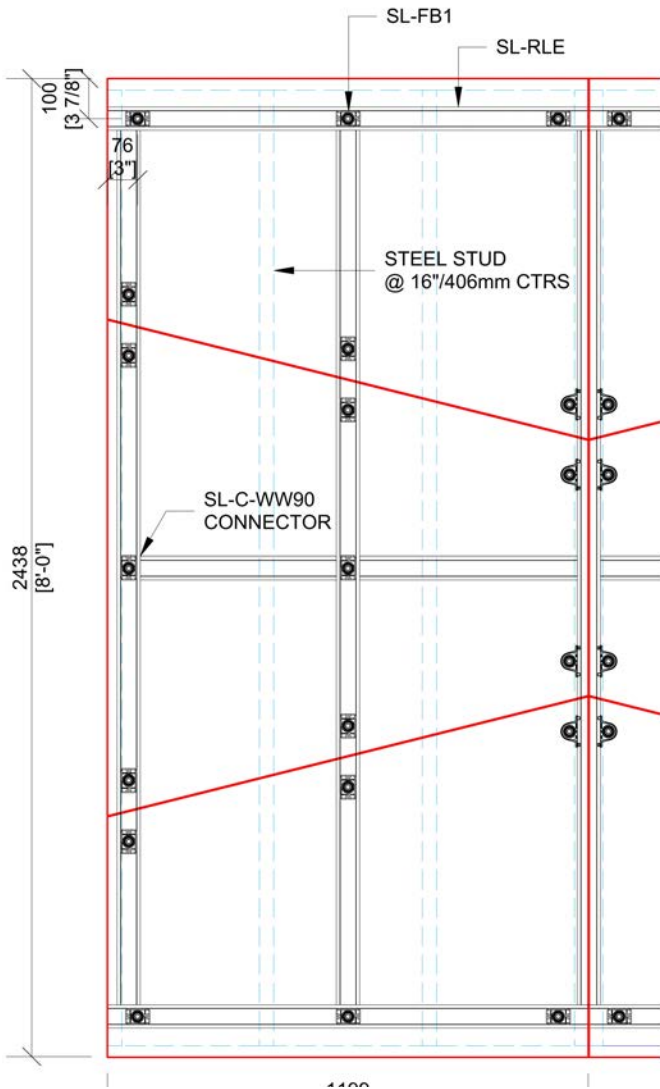


Stratlock Range

WALLS USING STRATLOCK RAIL

PANEL SIZE: COMPLEX SHAPES 4 X 8FT / 1200 X 2400MM

This document describes the layout of clips for standard panels of the specified size. For custom panels and or custom application please contact Fastmount team or Fastmount distributors for technical support.



VARIATIONS

- The maximum recommended distance between rails is 800mm / 2.6ft. Panels taller than described in this layout might require more than 4 horizontal rails.
- Place clips between 50 and 100 mm / 2 and 4 inches from vertical edge of the panels.

TIPS

- For light weight panels or very thin panels, more rails might be advised to avoid wavy edges.

PANEL WEIGHT LIMITS

- The maximum panel density for this application is 25kg per m² or 5 lbs per square foot.
- Male clips SL-M10 can only be applied to panel densities of maximum 15kg per m² or 3 lbs per square foot. Anything over this should be mounted with the SL-M18 male clips.

Model	Max panel weight density: Walls	Max panel weight density: Ceilings
SL-M10	15kg/m ² (3 lb/ft ²)	10kg/m ² (2 lb/ft ²)
SL-M18	25kg/m ² (5 lb/ft ²)	25kg/m ² (5 lb/ft ²)
SL-M18-FR	25kg/m ² (5 lb/ft ²)	25kg/m ² (5 lb/ft ²)

QUANTITIES PER SPECIFIED PANEL SIZE

Imperial system

Product code	Description	Complex area	Per square feet
SL-RLE	Aluminium extrusion	25.6 ft	0.8 units/ft ²
SL-FB1	Female clip	16 units	0.5 units/ft ²
SL-FA1	Female clip	4 units	0.125 units/ft ²
SL-C-WW90	Wall to Wall Connector	10 units	0.3125 units/ft ²
SL-M10 or M18	Male clip	20 units	0.625 units/ft ²

Metric system

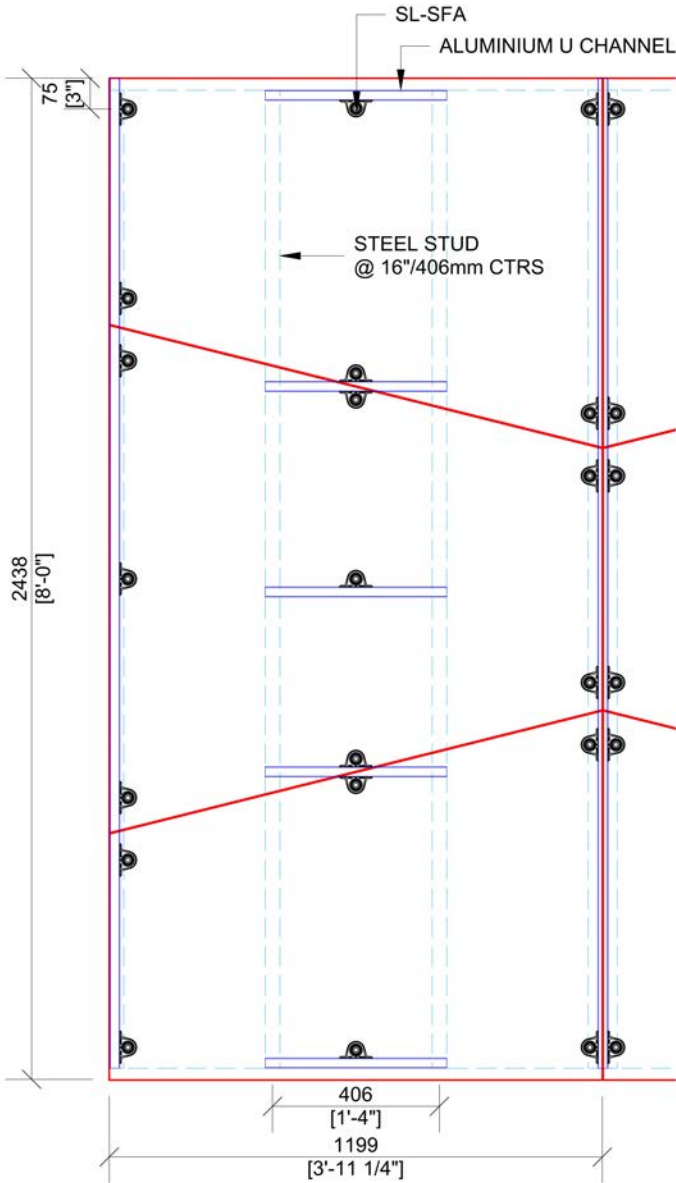
Product code	Description	Complex area	Per square metre
SL-RLE	Aluminium extrusion	7800 mm	2.7 m/m ²
SL-FB1	Female clip	16 units	5.5 units/m ²
SL-FA1	Female clip	4 units	1.38 units/m ²
SL-C-WW90	Wall to Wall Connector	10 units	5.6 units/m ²
SL-M10 or M18	Male clip	20 units	3.5 units/m ²



Stratlock Range

WALLS USING ALUMINIUM U CHANNEL 1" X 1" X 1/8" / 25 X 25 X 3MM
 PANEL SIZE: COMPLEX SHAPES 4 X 8FT / 1200 X 2400MM

This document describes the layout of clips for standard panels of the specified size. For custom panels and or custom application please contact Fastmount team or Fastmount distributors for technical support.



VARIATIONS

- The maximum recommended distance between rails is 800mm / 2.6ft. Panels taller than described in this layout might require more than 4 horizontal rails.
- Place clips between 50 and 100 mm / 2 and 4 inches from vertical edge of the panels.

TIPS

- For light weight panels or very thin panels, more U channels might be advised to avoid wavy edges.
- Box Section or RHS section can also be used in place of the U channel.
- Timber Battens can also be used in place of the U channel.

PANEL WEIGHT LIMITS

- The maximum panel density for this application is 25kg per m² or 5 lbs per square foot.
- Male clips SL-M10 can only be applied to panel densities of maximum 15kg per m² or 3 lbs per square foot. Anything over this should be mounted with the SL-M18 male clips.

Model	Max panel weight density: Walls	Max panel weight density: Ceilings
SL-M10	15kg/m ² (3 lb/ft ²)	10kg/m ² (2 lb/ft ²)
SL-M18	25kg/m ² (5 lb/ft ²)	25kg/m ² (5 lb/ft ²)
SL-M18-FR	25kg/m ² (5 lb/ft ²)	25kg/m ² (5 lb/ft ²)

QUANTITIES PER SPECIFIED PANEL SIZE

Imperial system

Product code	Description	Per 4 x 8 ft area	Per square feet
Orange 1"x 1"x 1/8"	Aluminium U Channel	15.75 ft	0.49 ft/ft ²
SL-SFA1	Female clip	19 units	0.375 units/ft ²
SL-M10 or M18	Male clip	19 units	0.375 units/ft ²

Metric system

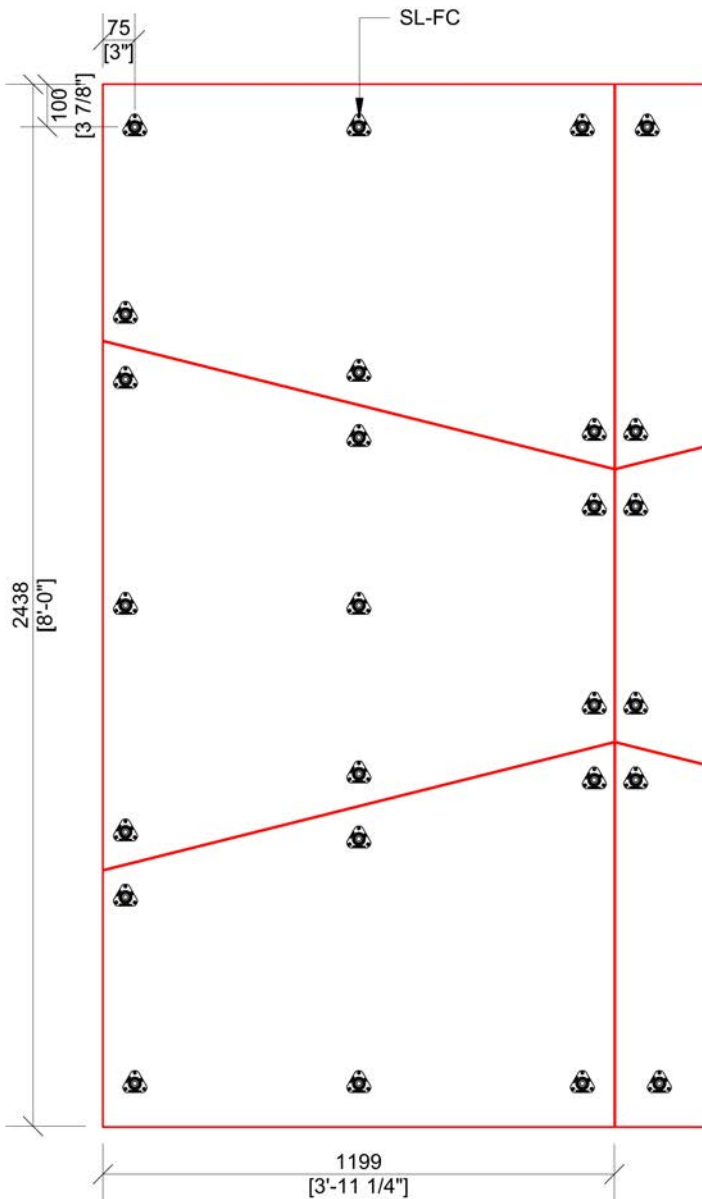
Product code	Description	Per 1.2 x 2.4m area	Per square metre
Orange 1"x 1"x 1/8"	Aluminium U Channel	4800 mm	1,666 m/m ²
SL-SFA1	Female clip	19 units	4.16 units/m ²
SL-M10 or M18	Male clip	19 units	4.16 units/m ²



Stratlock Range

WALLS USING STRATLOCK SL-FC SET INTO PLYWOOD PANEL SIZE: COMPLEX SHAPES 4 X 8FT / 1200 X 2400MM

This document describes the layout of clips for standard panels of the specified size. For custom panels and or custom application please contact Fastmount team or Fastmount distributors for technical support.



VARIATIONS

- The maximum recommended center to center distance between SL-FC is 600mm / 24".
- Place clips between 50 and 100 mm / 2 and 4 inches from vertical edge of the panels.

TIPS

- For light weight panels or very thin panels, more clips might be advised to avoid wavy edges.

PANEL WEIGHT LIMITS

- The maximum panel density for this application is 25kg per m² or 5 lbs per square foot.
- Male clips SL-M10 can only be applied to panel densities of maximum 15kg per m² or 3 lbs per square foot. Anything over this should be mounted with the SL-M18 male clips.

Model	Max panel weight density: Walls	Max panel weight density: Ceilings
SL-M10	15kg/m ² (3 lb/ft ²)	10kg/m ² (2 lb/ft ²)
SL-M18	25kg/m ² (5 lb/ft ²)	25kg/m ² (5 lb/ft ²)
SL-M18-FR	25kg/m ² (5 lb/ft ²)	25kg/m ² (5 lb/ft ²)

QUANTITIES PER SPECIFIED PANEL SIZE

Imperial system

Product code	Description	Complex area	Per square feet
SL-SFC	Female clip	20 units	0.625 units/ft ²
SL-M10 or M18	Male clip	20 units	0.625 units/ft ²

Metric system

Product code	Description	Complex area	Per square metre
SL-SFC	Female clip	20 units	6.9 units/m ²
SL-M10 or M18	Male clip	20 units	6.9 units/m ²

