

Stratlock Design Guide

The Stratlock Range is a heavy-duty panel mounting solution for installing interior wall and ceiling panels and provides 360° adjustment of panels a total of 8mm (3/8") before locking into place.

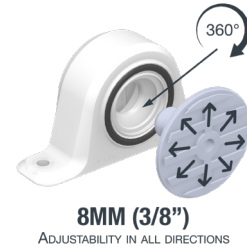
Designed for the contract interior fit-out industry, typical applications include heavy wall and ceiling panels in the interiors of hotels, hospitals, retail shops and commercial fitouts.



Stratlock Design Guide

ADJUSTABILITY

The Stratlock Range of clips feature 360-degree adjustability, allowing for versatile and precise positioning of panels a total of 8mm (3/8") before locking into final position.



APPLICATIONS

The Stratlock Range allows panels to be installed onto the following applications:

TIMBER/ALUMINUM FRAMEWORK

Panels mounted to a timber stud wall or ceiling. Can also be installed onto drywall substrates with timber studs attached.



PLYWOOD/MDF

Panels mounted into a plywood or MDF wall or ceiling.



STRATLOCK RAIL SYSTEM

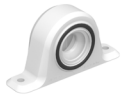
The Stratlock Rail System can be used to create a wall and ceiling grid system, suspend a ceiling and can even be used to create a stand-off from the wall. Can be installed onto drywall (with studs behind), timber/plywood and concrete walls and ceilings.



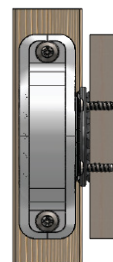
Products Used:

SL-SFA - SIDE MOUNTED FEMALE CLIP

Screwed to the side of the frame using 2x8g 16mm (5/8") screws.



PANEL GAP



Gap between panel and frame

6mm
[1/4"]

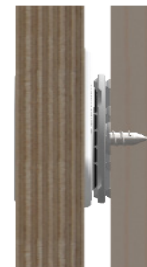
8 clips recommended per sq/m of panel*
1 clip recommended per sq/ft of panel*

SL-FC - FLUSH MOUNTED FEMALE CLIP

Installed by pre-drilling a 40mm (1.6") hole and screwed using 3x8g 16mm (5/8") screws.



PANEL GAP



Gap between panel and frame

7mm
[0.27"]

9 clips recommended per sq/m of panel*
1 clip recommended per sq/ft of panel*

SL-RLE - STRATLOCK RAIL EXTRUSION ALUMINUM

Installed using 8g screws.



SL-FA AND/OR SL-FB1 - SIDE MOUNTED FEMALE CLIP / FLUSH MOUNTED SQUARE FEMALE CLIP

Clipped into SL-RLE rail and screwed using 2x8g 16mm (5/8") screws.

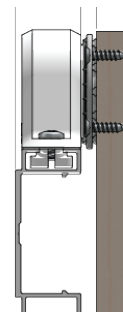
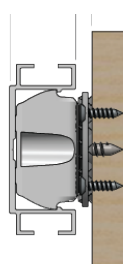


SL-SMT1 - SIDE MOUNTED CEILING CLIP (OPTIONAL)

Clipped into SL-RLE rail and screwed using 2x8g 16mm (5/8") screws.



PANEL GAP



Gap between panel and frame

6mm
[1/4"]

9 clips recommended per sq/m of panel*
1 clip recommended per sq/ft of panel*
1.667m of rail per sq/m of panel*
0.61ft of rail per sq/ft of panel*

Stratlock Design Guide

CONNECTORS (OPTIONAL)

Connectors can be used to help build a wall and/or ceiling grid system when used alongside the Stratlock rail.

Connectors are available in either plastic or metal options.



**SL-C-WW90-FR
T-CONNECTION (PLASTIC)**



**SL-C-WC90-FR
CORNER CONNECTION (PLASTIC)**



**SL-RCF90
T-CONNECTION (METAL)**



**SL-RCAB180
ADJUSTABLE CORNER CONNECTION
(METAL)**

MALE CLIPS

These male clips can be used for both the above applications:

SL-M10 OR SL-M18 - SURFACE MOUNTED MALE CLIP 10KG (11LB) OR 18KG (40LB)

Screwed using 1x 32mm (1 1/4") 8g CSK screw or glued to the panel using a 2-part epoxy glue.



**All per sqm/sqft calculations based on a 2.4m x 1.2m (8x4') panel. For other panel sizes, please refer to our Stratlock Clip Layout Guides.*